

# Interactive session

CNR-IREA

**INFORM**

User Uptake Workshop

16-17 November 2017

European Environment Agency, Copenhagen, Denmark



# OUTLINE

- Interactive session: corners with poster/model products
- Open discussion: questions/comments and future requirements and recommendations



User Uptake Workshop

16-17 November 2017

European Environment Agency, Copenhagen, Denmark



# 5 Interactive corners

WATER  
QUALITY  
MODEL

RIVER

LAKE

LAGOON

WETLAND



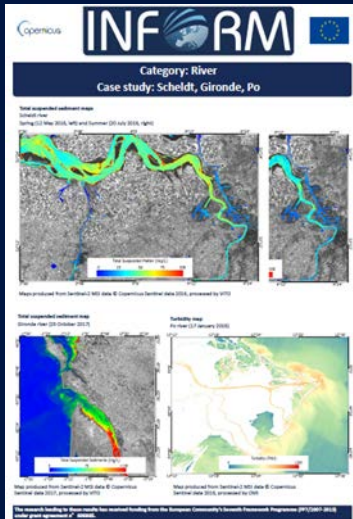
User Uptake Workshop

16-17 November 2017

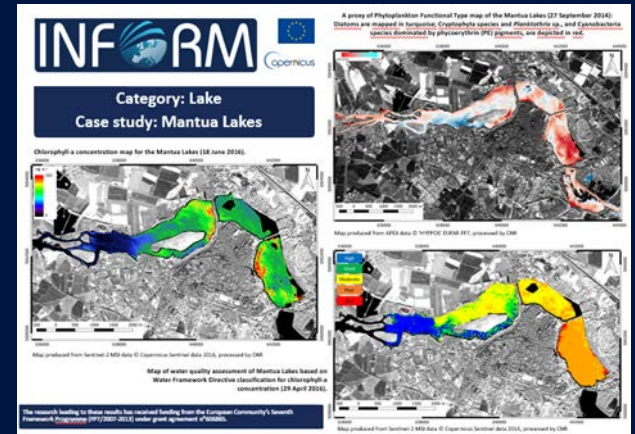
European Environment Agency, Copenhagen, Denmark



# Posters



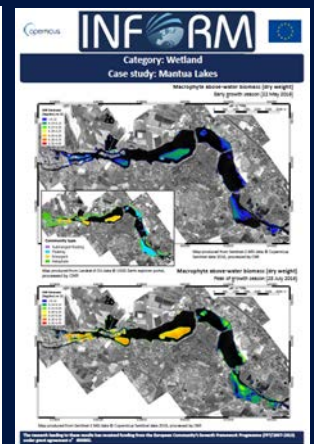
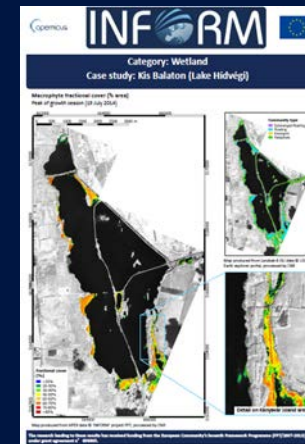
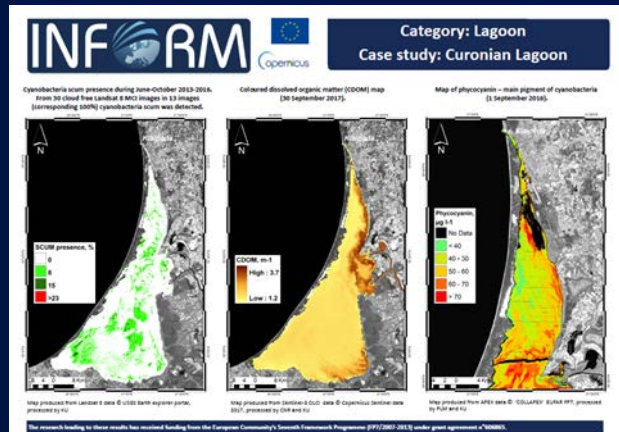
RIVER



LAKE

WETLAND

LAGOON



User Uptake Workshop  
16-17 November 2017

European Environment Agency, Copenhagen, Denmark



# General questions for Posters

1. How do you interpret the results of the map?
2. In the map, are there areas of particular concern?



User Uptake Workshop

16-17 November 2017

European Environment Agency, Copenhagen, Denmark



# Questions for LAKE poster

1. How do you interpret the results of the three maps?
2. In the Chl-a concentration map, are there areas of particular concern?
3. Is the water quality map based on Water Framework Directive (WFD) classification a useful tool to answer to i) monitoring purposes and ii) WFD reporting?
4. What is unclear in the products?
5. Can these products be useful in your study areas? Why?

# Questions for WETLAND poster

1. Is this product useful in your study areas? Why?
2. Can you interpret the meaning of the map?
3. What is unclear in the product?
4. Is it an advantage for your activities to know the different community type present?

## MANTUA LAKES:

1. Do you think that knowing the trend of biomass growth (start and peak of season) can be an advantage for your study area?

## KIS-BALATON:

1. Is the % of coverage at peak of season of the different group of macrophytes a useful product for your study area?



# Questions for LAGOON poster

1. How can you interpret the results of cyanobacteria scum presence map?
2. The knowledge about spatial distribution of dissolved organic matter can be a useful product for your study area? Why?
3. The information about phycocyanin concentration in the water can be a useful tool for monitoring purposes?
4. Do you think that these products could be useful for assessment of progress of measures taken to improve ecological status?
5. What is unclear in the products?



User Uptake Workshop

16-17 November 2017

European Environment Agency, Copenhagen, Denmark





# Questions for RIVER poster

## 1. Feedback

Is the TSM (mg/L) or Turbidity (FNU) river product useful for your work on your study areas

If so, how would you use the river product?

## 2. Recommendations to improve the river product



User Uptake Workshop

16-17 November 2017

European Environment Agency, Copenhagen, Denmark



# Questions for modelling

1. What is the relation between wind speed total suspended matter concentration?
2. What is the impact of the artificial island on TSM?
3. Can you explain how these type of models can help in scenario analyses?
4. Where would you put another island?
5. What would be the added value of models to earth observations?



User Uptake Workshop

16-17 November 2017

European Environment Agency, Copenhagen, Denmark



# OPEN DISCUSSION

CNR-IREA

**INFORM**

The word 'INFORM' is written in a bold, dark blue, sans-serif font. The letter 'O' is replaced by a stylized globe. The globe is light blue and shows the outlines of continents. Above the globe, there are several curved, overlapping lines in shades of blue, suggesting a satellite or data stream.

User Uptake Workshop

16-17 November 2017

European Environment Agency, Copenhagen, Denmark



# Agenda

1. 10:45 **Water quality modelling** (*Miguel Dionisio Pires - Deltares*)
2. 11:15 **Sediment products** (*Ils Reusen - VITO*)
3. 11:30 **Light attenuation and euphotic depth products** (*Dimitry Van der Zande - RBINS*)
4. 11:45 **Chlorophyll a, Phycocyanin and Phytoplankton functional types products** (*Mariano Bresciani - CNR*)
5. 12:00 **Macrophytes products** (*Paolo Villa - CNR*)
6. 12:15 **Primary Production and Sun-induced chlorophyll fluorescence products** (*Claire Neil - U Stirling*)
7. 12:30 **CDOM products** (*Stefan Simis - PML*)
8. 12:45 **Stratification products** (*Karin Schenk - EOMAP*)

# From Gary Free presentation

Q1 A lot of ecological parameters are already measured-  
Would EO Chl-a be a useful or redundant addition?

Some analysis:

Examine all current ecological parameters (Analysis run for lakes and using in-situ summer Chl-a to simulate expected outcome)

- Would EO Chl-a increase  $r^2$  in prediction of total P?
- Could EO Chl-a replace phytoplankton element in ecological assessment of lakes?
- Could Chl-a give reasonable estimated of WFD ecological assessment allowing prediction of a status?

# Feedback on each EO/model product

1. What is unclear in the product?
2. Can the product be useful in your study areas? Why?
3. Which possible added value can the presented product provide you?
4. How do you think to integrate this kind of product in your activities?

# Recommendations for each EO/model products

1. What can be improved?



User Uptake Workshop

16-17 November 2017

European Environment Agency, Copenhagen, Denmark





# Questions for Geoportal

The current geoportal (don't use Internet Explorer) has catalogue search, viewing, time animation, time series viewer and download functionalities for some products

1. Is the current version of the geoportal friendly to use?
2. Have you easily found the product you need?
3. How do you think to use the product in your activities?
4. For the next version of the geoportal, the following functionalities will be considered: new user friendly front end, pixel values extraction and profile, add legend to time series viewer. Other suggestions?

# Future requirements and recommendations

1. For future projects and satellite missions, do you have additional EO or modelling products requirements or recommendations for inland water quality monitoring/research/management?
2. For the future are you interested in models that can produce scenarios for the effects of possible measures that have been planned (dam, dredging, biomanipulation...) in inland waters of your interest?
3. Any other suggestions?



User Uptake Workshop

16-17 November 2017

European Environment Agency, Copenhagen, Denmark

